

It's The Harby Journal

March 2011



“ OH NO IT ISN'T ”



Photography by Eddie Lilley

Harby Harlequins 13th annual pantomime “Jack and the Beanstalk” played to a full or near full village hall over five performances, and the show can deservedly be acclaimed as a resounding success. All were fun filled performances of this unusual tale, like no Jack and the Beanstalk you’ve ever seen before nor likely to see again. The Harlequins welcomed some new talent, who all played brilliantly, and hopefully will return.

Many have kindly commented that the talent and commitment shown by the whole company, all from the Vale, is incredible. But without the outstanding support of the audiences it would all be for nothing. So thanks to all.

More photos on page 14

HARBY GARAGE

Telephone 01949 860213

BODYWORK, ACCIDENT DAMAGE,
GENERAL MECHANICAL REPAIR

Mon - Fri 7 am - 7 pm

Sat 7.30 am - 7 pm

Sun 9 am - 1 pm

the
tea
junction

0776 781 2514

Mon - Fri 8 am - 2 pm

Sat 8 am - 1 pm

Phone and collect

C J Green 10 Main Street, Harby,
Melton Mowbray LE14 4BN

Furniture Restoration & French Polishing



Repairs * Furniture Stripping * Upholstery * Rattan
Caning * Wicker & Rush Work * Leather Work *
Marquetry & Inlays * Veneers * Woodturning

Tel: 01949 860687 or 07989 697041

KMF HANDYMAN SERVICES

Call Ken:-

For home improvements including:

*Bathrooms, Kitchens, Timber Buildings,
Painting, Decorating, Tiling, Flooring,
Plumbing, Electrical, Woodwork&Metalwork*

Quality Work & Reasonable Rates

Ken Fulton...01949 860060

Mobile...07854 134147

B H ELECTRICAL

Domestic & Commercial Installation



*Approved Domestic
Specialist for*

Rewires Sockets
Lighting Showers
Fuse Boards Faults

Inspection - Testing - Certification
for landlords & homebuyers

Call Brian on

01949 860099

Bradley Cottage Pinfold lane Harby



W J Smith & Son

Building & Roofing Contractors

Established 30 years

All types of building & roofing work undertaken

No job too small

For a quote at competitive rates telephone :

Home - 01949 860169, Mobile - 07946172571 & 078341924

Editors Ramblings

If you don't like 80%, you would hate 99%. I'm talking about the cocoa content in chocolate. The Lindt 99% dark chocolate actually comes with warnings on the inside packaging in four languages about how strong the chocolate is and how you should "develop your palate" with weaker chocolates first.

With no milk, and just barely enough sugar to make it palatable, a couple of squares of the Lindt 99% with a cup of coffee and glass of wine and you will be chocolated out. Each square has only about 10 calories since there's very little milk or sugar.

Valentine's Day has just gone and turned everyone's minds (and mouths) to chocolate, and also chocolate has been featured in the news as promoting a healthy heart. Now there's a great excuse to eat the delicious stuff! It's been shown that a 1.6 ounce bar of dark chocolate a day can improve circulation, help blood vessels dilate, lowering blood pressure. Chocolate has to contain flavonoids - compounds that are also found in red wine, blueberries, and green and black tea. Flavonoids lower cholesterol and prevent clots. So the downside is.... what? Milk chocolate also has flavonoids, but the milk cancels the effects out, and it's held together with nasty nasty trans-fats.

So enjoy your dark chocolate knowing that you are doing something good for your heart.

I'd like to extend my thanks to Graham Kimbell who has been delivering the Journal to you for the past 4 years or so. In his own words, he is "now an old man" at 16 and has passed the opportunity on to younger feet (welcome to Charlotte). Many thanks also to Leslie Cram who has decided to pass on the journalist duties for Brownies, Pre-school and church reports after many years dedicated and reliable reporting.

Bottesford Police Station opening times

Mondays 2 pm - 4 pm
Wednesdays 6 pm - 8 pm
Fridays 10 am - 12 noon
except Bank Holidays
At other times contact 0116 222 2222 or 999 in an emergency

Post Office at Harby Garage

41 Nether Street, Harby, LE14 4BW
Mon to Friday 9 am - 5.30 pm
Saturday 9 am - 1 pm
Sunday Closed

HARBY VILLAGE HALL

AVAILABLE FOR HIRE
Justine Cline: 01949 860480

Useful numbers

Leicestershire Police 0116 222 2222
Crimestoppers 0800 555 111
Harby Neighbourhood Watch 860081
NHS Direct 08 45 46 47
Childline 0800 11 11
Samaritans 08457 90 90 90
Severn Trent Water 0800 783 4444
Melton Borough Council 01664 502 502

The Harby Journal editor is Kevin Becken, 5 Boyers Orchard, Harby.

Tel: 01949 860081
email: kevinbecken@talktalk.net

Submission deadline is the 15th of the month for the following month's edition.

HARBY ST MARY'S CHURCH



DATES FOR YOUR DIARY MARCH 2011

- Wednesday 2 12.15 pm Lunch in village hall.
Sunday 6 8.30 am Holy Communion.
Tuesday 8 7.00 pm for 7.30 Shrove Supper in the village hall. Tickets at
£8.50 available from Christine Booth (861287) and Gill Clark (861211).
Sunday 13 6.30 pm Holy Communion.
Sunday 20 10.30 am Holy Communion. 6.30 pm Compline.
Sunday 27 10.30 am Family Service.

REMINDER

Summer is on its way and the clocks go forward at 1 am in the early morning of Sunday 27 March.

CONFIRMATION

In Barkstone church on 7 February, Bishop Christopher Boyle led a confirmation service for eleven people of all ages from the Vale. Our congratulations go to the two from Harby who were confirmed, Milly Morgan and Emily Towns.

Obituary

Pat O'Brien, District Nurse.

Pat O'Brien died aged 91 on 12 January 2011. She was buried in Harby churchyard on Friday 21 January following a funeral service at St John the Baptist Church in Melton Mowbray.

Pat was born in Birkenhead in 1920, her mother from Wales, her father from Ireland and she kept something of her Irish accent all her life. She trained as a nurse in London for 5½ years to become a State Registered Nurse, then took further training in midwifery to qualify to become a District Nurse. She came to our area in the early 1950s, at first taking lodgings at Lodge Farm in Harby and continuing to live in the village for the rest of her life. She rented and then bought Kinsale, the house at the south end of Green Lane which she shared with her friend Barbara Stead.

The job of the District Nurse involved responding to calls in emergencies as well as routine visits and she was out in her car at all times of the day and night and all weathers. During her work here she delivered 162 human offspring, not to mention calves and lambs when a vet was not easily available.

Her interests were outdoor, such as gardening, walking, and bird watching. She explored the continent, travelling by bicycle and staying at youth hostels, Yugoslavia being her



favourite country.

She retired in 1983. Her health and that of Barbara declined in their later years but they had regular visits from their friends to Kinsale to enjoy their hospitality. Pat moved into a residential home in the last years of her life where she died peacefully.

Our condolences go out to her friends and family.

Obituary

Enid Pick

Enid Pick, who was buried on 7 January 2011 in Harby churchyard, was born in 1903 at Jackson's Farm, Harby. She was the second of the three daughters of Charles and Anne Rawlinson. The family moved when she was three to Harby Lodge Farm on Colston Lane. She grew up as a farmers daughter, attending the village school until her early teens. On Sundays she was at the Sunday school at church, first as a pupil then as a teacher. She sang in the church choir. After learning to play the piano with lessons in the village she went to Melton Mowbray to learn to play the organ, after which she was one of the organists at church. She was a founder member of the WI when it began in 1927, and she continued as a keen supporter in later years.

In 1936 she married Walter Pick, farmer at the Poplars with the adjacent milking sheds where she continued life as a farmer's wife, with duties such as selling eggs at the market in Melton Mowbray on Tuesdays. Her younger sister Vera continued to live at Harby Lodge, taking over the running of the farm after the deaths of their parents.

Walter died in 1990 and Enid moved back to Harby Lodge until increasing infirmity in old age meant a move to residential home care. With her death aged 107 we have lost one of the oldest links with the past of our village.

Our condolences go out to her family and friends.



MOTHERS' DAY



3 course lunch **£ 11.95**

SUNDAY 3rd APRIL * Nags Head, Harby

Serving from 12 noon to 7.00 pm

Specially prepared and cooked by

"SIRLOIN" SMITH and "STICKY" STEWARD

and served by **"JUICY" JUSTINE**

Booking Essential

Tel: **07915 111812**



VALLEY CHRISTIAN FELLOWSHIP

Welcome to VCF notices for March

Are you hard pressed for time? Do you wish there were more hours in the day? Are you always running from one thing to another? Pressure cookers work on sealing in some meat or vegetables with a small amount of water and raising the temperature so that the steam from the trapped water is forced through the food tenderising it over a shorter time than conventional cooking. But before the lid is removed the steam has to escape and it does so quite forcibly once the valve is opened. You don't want to get in the way of that steam. We are like pressure cookers when we run around in our own strength trying to fix things. We seal pressures inside of us until eventually the valve blows and anyone nearby gets blasted with our steam.

There was no one busier than Jesus. He was rarely without a crowd around him. His own personal space was constantly invaded. He was someone under incessant pressure but he refused to submit to the crowds of even human need to dictate and set his priorities. He had inner freedom to say 'No'. His priorities were set by His Father God's perspectives for the greater glory His life would bring not the immediate. He would regularly retreat to a quiet place to get that. In short, He wove his way safely through the manipulation of men because He had been alone with the Father. If Jesus found time to do that with His Father then shouldn't we?

"Come to Me, all you who labour and are heavy laden, and I will give you rest. Take My yoke upon you and learn from Me, for I am gentle and lowly in heart, and you will find rest for your souls. For My yoke is easy and My burden is light." . Matthew 11:28-30



SUNDAY SERVICES IN MARCH commencing at 10.30 am



6th Morning Service with Holy Communion. Junior Church
13th All Age Family Service
20th Morning Service with visiting speaker. Junior Church
27th Morning Service and Junior Church

WHAT ELSE?

A new Alpha Course will be running at Dove Cottage Tea Rooms after Easter. Please ring any of the numbers listed if you are interested in joining this next course. More info will be published nearer the time.

Home groups, Babes and Tots, Jubilee Club (60+ friendship group), Marriage prep courses, Art Workshops and more. Check out what's happening at VCF by logging on to harbycf.org.uk.

LISTEN TO UCB RADIO on DAB or streamed from the Internet at ucbmedia.co.uk

Free booklets - WORD FOR TODAY. Full of inspiration for every day explained in a practical 'down to earth' way. Published by UCB (United Christian Broadcasters). If you would like a copy Ring Ruth on 861461, Joy on 861415 or UCB on 0845 60 40 401 . Alternatively try checking out their web site at lookingforgod.com

For further information on any courses or activities please contact Pastor Steven Wright (861835) To book the small hall for children's parties or other functions please contact Ruth De Silva (861461). Please note before booking that there is a no smoking and no alcohol policy on the premises for party events.



AUCTION - SATURDAY 12TH MARCH 2011

This is the first of our twice yearly auctions. We have lots of household items to auction including paintings, china, glassware, appliances, toys etc. If you enjoy bidding for a bargain, come and join in the fun and help raise money for the hospice. Don't forget to empty those cupboards, lofts, sheds and garages as donations of items always welcome.

Goods accepted during w/c 7th March Monday - Thursday 9.00 am - 4.00 pm.

Viewing starts at 12 noon with the auction starting at 1.30 pm.

Bacon butties and refreshments available!

ANNUAL SUMMER FETE SUNDAY 15TH MAY 2011 1.30 - 4.30 pm

Our biggest fundraiser of the year. A lovely traditional summer fete with live entertainment, music, cream teas and cake, barbecue and stalls.

Free entry. Parking £2.50

If you would like to book a stall please contact the hospice.

VOLUNTEER APPEAL TEA ROOM/CHARITY SHOP & GARDENS

We are always looking for new volunteers to help out either in the tea room or the charity shop. No experience is necessary and full training will be given. We are also looking for keen gardeners to tidy up our borders and play area. If you can spare just a couple of hours a week/weekend/month we would be delighted to hear from you.

Please contact the tearoom on 01949 861950 for more information.

Dove Cottage Day Hospice, Canal Lane, Stathern, Melton Mowbray, LE14 4EX
Tel: 01949 860303 Email: office@dovecottage.org

HARBY LITTER PICK



LITTER PICK REMINDER

Does it depress you or irritate you to see litter on the roads, footpaths, verges and in the hedge bottoms? Then come to the Village Hall on **Saturday 12 March at 10.00 am** to join our annual Tidy Up. Pick up a litter pick kit and help to clean up so that we can be proud of our village. Bring your children and they will receive a certificate for taking part. Soup &

roll will be available on return.

Alan Semper, Litter Pick Co-ordinator 01949 861 109 alan.semper@talktalk.net



Digital Switchover - Volunteers sought!

TV is going digital. The existing analogue TV signal will be switched off and replaced with a new digital TV signal. Almost everyone will be able to receive digital TV through an aerial, but TVs will need to be retuned at the appropriate times, and some may need a set top box.

There will be a number of roadshow events and advice points around the area to inform people what is going to happen and a help scheme is available for people who may experience difficulties. It is anticipated that around 5% of people may experience difficulties and may not know where to go for the help that is available.

Volunteering for the Rural Community Council - Volunteers are now sought to help people access the information and support.

The RCC (Leics & Rutland) is seeking up to **45 volunteers** from across Leicester, Leicestershire and Rutland who will be local contact points and able to help people access the help scheme or seek appropriate advice. Training will be provided and **expenses up to £350** will be available for these community volunteers. The project will be undertaken between March 2011 and September 2011 and most work will be undertaken in your own local area.

If you feel that you would like to volunteer please contact Diana Cook for more details and an application form

dcook@ruralcc.org.uk

0116 2689706

or see our website

<http://www.ruralcc.org.uk/latestnews.html>



The Rural Community Council (Leicestershire and Rutland) ensures that those who work and live in rural communities are provided with access to a range of opportunities, services and facilities which are sustainable and inclusive to all and that they are empowered to influence and manage their own future.



HARBY WOMEN'S INSTITUTE

Jane Wheeler

On 27th January the W.I. met for the first meeting of the new year. It was a Members Evening where we discussed events for the coming year. Ann Mace, our president, opened the meeting and welcomed all members old and new and set out our programme for the year. This includes 10 various and interesting speakers and several outings to Stately Homes and Gardens, a skittles evening and even Paintballing!! Whoever thought the W.I. was just about making jam should come along and see!! The evening continued with a supper which consisted of two different home made soups made by the committee, which were delicious, and about 10 different puddings which were all mouth-watering. Thank you to the Walnut Paddock ladies for those. I was lucky enough to sit at the table nearest them and sampled most of them and they were to die for!! We finished the evening with a quiz based on cakes and puddings which was provided by Sylvia Stafford and caused much hilarity and I suspect a certain amount of cheating!! The lovely table flowers were done by Janine Bean, and the Vote of Thanks by Anne Quaiff.

March 24th - Dirty and Smelly - Mrs. J. Moulds.

Let's go out for a walk this week!

Vale of Belvoir Ramblers

March 2011 walks



- Sun 6 East Bridgford, Notts 6 miles 10:00 am.
Field paths to Kneeton; back beside the Trent
- Sun 13 Swithland and Quorn, Leics 8 miles 10:00 am.
Easy paths to Cropston Leys, Quorn & Woodhouse Eaves
- Sun 20 Hathersage, Derbys 12 miles 10:00 am.
Hilly walk with good views and a nice story
- Wed 23 Epperstone, Notts 9 miles 10:00 am.
To Halloughton and back - lovely views.
- Sun 27 Vicar Water/Maun, Notts 8 miles 10:00 am.
Explore the wooded Maun Valley and Vicar Water.



We kick off our March programme with a relaxing morning walk from East Bridgford with optional home-baked treats at the end by local NSPCC volunteers served in aid of the NSPCC (£3 each for tea and cake). With lighter evenings there are chances for longer walks too – this month 12 hilly miles near Hathersage in Derbyshire, for those who enjoy a more challenging day.

New walkers are always welcome for 2 or 3 try-out walks before joining the Ramblers. Call 0115 9825600 for a free Vale of Belvoir Ramblers programme, or see the online Walks Finder at www.ramblers.org.uk/ for more details of all Ramblers local group walks.

Dear Editor,

INCONSIDERATE PARKING

When walking my children to Harby school, I often see cars parked inconsiderately opposite the school, with vehicles having two wheels on the road and two wheels on the kerb. This results in cars travelling down School Lane being forced into the middle of the road around a blind corner. Just recently, a car than was fortunately going slowly along School Lane was forced to do an emergency stop to avoid hitting a child crossing the road to school. The child had not seen the approaching car because the parked cars had blocked his view.



Please park considerately for the safety of everyone in our village rather than thinking how close one can get to the school gate.

From a concerned parent

Harby Church of England Primary School

expanding horizons, exploring potential for children aged 4 -10 yrs
phone/fax 01949860553 e-mail office.school@harby.leics.sch.uk
www.harbyleicssch.org.uk

Child care with Planet Play

8.00 am – 8.50 am and 3.15 pm - 6.00 pm



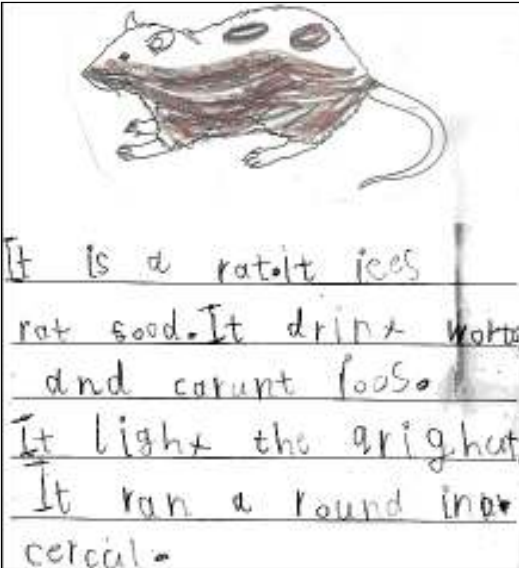
Of
Outs
200
200

Belvoir Challenge

The date for this year's long distance walk/run is Saturday 5th March with the start for both the sixteen mile and twenty-six mile events being on School Lane at 9.00 am. The school apologises for any inconvenience caused by the event. If you have any available off road parking the Friends of Harby School would be very pleased to hear from you.

Writing from around the school

Miss Taylor's rat visited Reception class



It is a rat. it ices rat food. It drinx worter and carunt joos. It lighx the grighet. It ran a round in a cercal.

By Rose

Reception class unaided writing

Year 3 and 4 have been studying World War II. Here is Chloe's poem.

Scary, loud Spitfire
Flying right over my head,
So low I can nearly touch it,
It's going to war
I'm so scared,
I run inside and hide under my
cover
I hear the fighting,
A bang here,
A bang there!
I look towards London
The sky is red
London's burning.

Chloe Year 4

Year 5 and 6 have been studying the coast by looking closely at Ordnance Survey maps. Here is Robson's report of Bournemouth.

Bournemouth is a town near Poole on the A35. From Bournemouth to Poole it is 11 km west. From Bournemouth to Christchurch it is 10 km east. Bournemouth is on the South coast of England. Poole Bay is 3km from Bournemouth.



There are many things that you can do in this area such as visiting two nature trails. The beaches are mainly sandy with some shingle and are wide. There are two piers to the east of the bay. These can provide disabled people with easy access to the beach. Inland Bournemouth has two big golf courses one lies to the east and one to the west.

Robson Year 5



For the Chinese New Year we held a Chinese evening when we

tasted various kinds of Chinese food, and paraded the big dragon with its fierce head that we had made the week before. We prepared for Thinking Day on 22 February, the birthday of our founder Lady Baden-Powell, when Brownies, Girl Guides and Girl Scouts all over the world think about each other, and how many guiding friends they have all over the world.



Photography: Leslie Cram

TREE WARDEN'S NOTES

SOME FAMOUS TREES

The Fortingall Yew - *Taxus baccata* (Perthshire)

Estimated to be between 2000 and 5000 years old. This would make it the oldest living thing in Britain. At one stage its girth was 17m / 56ft. Over the last 100 years it has been damaged by souvenir hunters who have cut off large pieces and as a result (together with natural decay of the heartwood) the trunk is now split into several separate stems. A wall has now been built around it to protect it. Recently cuttings have been taken to be grown as clones in case the original tree dies and to form a mile long hedge at the Royal Botanic Gardens in Edinburgh.



Yew trees were revered and regarded as the tree of eternity. They often marked a place of worship and there is a church at the side of the yew. Close by archeological finding indicate the presence of Bronze Age tumulus and an Iron Age cult centre.

The tree is a popular tourist attraction and the Tourist Board has erected a time line slab indicating historic events that have happened over the life of the tree.

Stronardron Douglas Fir (Argyll)

Discovered during the 2009 Tall Trees Project. It measures 63.79m / 209ft. This is massive compared to Nelson's Column which only measures 51.6m / 169ft. Believed to be between 100 and 150 years old. It is in good health and expected to grow at the rate of 250mm / 12" each year.



The Douglas fir was introduced to Europe from North America in 1826 by David Douglas, a Scottish botanist. Tall trees tend to be in Scotland because of the high

rainfall and relatively warm climate, trees in forests tend to grow taller because they are squeezed in and can't spread their branches sideways.

The next tallest tree is a Grand Fir at Blair Castle and the previous tallest tree was the Dughall Mor Douglas fir at Inverness

Alan Semper, Harby Tree Warden, 01949 861 109, alan.semper@talktalk.net

HARBY VILLAGE HALL

Forthcoming Village Hall Events include:-



17 March - AGM - at Harby Village Hall at 8 pm - all welcome

19 March - Jumble Sale (10 am - Noon). If you have any jumble please hang onto it! Jumble donations can be taken to the Hall on Friday 18 March (for timings see posters around the village) or we can collect it from you. Please call Justine (860480), Bella (861465) or Jocelyn (861422) for further details.

19 March - Quiz - 7.30 pm - Tickets from Yvonne Farnsworth (861580) priced at £7.50, which includes a hot supper and dessert.

9 April - 50/50 Auction - Unwanted Christmas presents and usable goods? Sell them and raise funds for yourself and help towards a new hall by taking part in our 50/50 Auction, hosted by the one and only with Paul Steward. For details please call Andy on 01949 861599 or Paul on 01949 860112. Look out for posters on delivery of items and timings on the day etc.

19 June - Open Gardens, Scarecrows, Stalls and Cream Teas. From 1 pm.

9 July - Proms in the Park - imagine sitting outside watching the sun go down on a balmy summer's evening listening to live Classical Music from the Nottingham Concert Band... more details to follow nearer the time - keep the date free!

Also..... after many(?) years of loyal(?) service, the village hall cooker has finally given up the ghost! If anyone has an electric cooker surplus to requirements which they would like to re-house, or knows where we may get one at a reasonable price, please call us! We are planning a full refurbishment of the kitchen later in the year but in the meantime need something to cook on! Any colour, any design, any working electric cooker welcomed with open arms! If you can help please call Eddie on 861409 or Paul on 860112.

Harby History Group

Sales of "Harby - Village life in the Vale of Belvoir" history book been excellent, and have now covered the printing costs with the help from donations listed on page 6 of the book.

Harby Shop, Melton Bookshop, The Vintage Tractor Centre and members of the group have all contributed to the sales success. Bottesford Post Office, Cotgrave News Shop, Grantham Bookshop and Downtown all have the books on sale. Many thanks to all concerned for their support.

Copies of the book have been sold far and wide: one to a descendant of the Dickman family who lives in South Africa and another to a descendant of the Loseby family, who farmed in Harby in the early 1800s and emigrated to Australia in about 1845.

The Group A.G.M. will take place sometime in May (details later). All are welcome to attend and assist in future plans for the Group.

John Blundy

HAVE YOUR SAY ABOUT LOCAL GREEN SPACE

Leicestershire has some fantastic green spaces. If you feel strongly about green space in your local area, we want to hear from you!

The Coalition Government is thinking about creating a new designation to protect green areas of particular importance to local communities. We want to start now, by finding out your views about the green spaces that are important to you.

Which areas are particularly important to you and why? Which areas need protection?

You can take part by attending your local Community Forum. Your views will be critical in developing future policies and proposals.

The next meeting of the Belvoir Community Forum will be held at Waltham on the Wolds Village Hall, 19 Goadby Road, Waltham on the Wolds LE14 4AG on Tuesday 15th March 2011, 6.30 pm for 7.00 pm start.

If you would like to find out more about this particular Community Forum, have views on green space in Leicestershire that you would like to discuss, or have any items or issues that you would like to see featured at future meetings please contact Peter Holbrook (chair of the Forum) at www.wotwatapc.org.uk and leave your comment in the guest section. Alternatively, you can send an email to clerk@wotwatapc.org.uk

For details of Community Forums in your area, please visit www.leicestershireforums.org or contact Derk van der Wardt on 0116 3057581



HARBY PRE-SCHOOL

Helping to give your child the best start in life.



Harby Pre-school is open from 9 am to midday on Mondays, Tuesdays, Thursdays and Fridays.

If you are interested in a place contact

Viv Hewson on 01949 860354.





It has been brought to the attention of Neighbourhood Watch that some dog owners are not clearing up after their dog has fouled the public footpath. There did seem to be a time when this problem eased, but now it has returned. Gas Walk and Red Causeway are areas where this anti-social problem has been particularly noted.

According to Keep Britain Tidy it is the responsibility of the dog owner/person in charge of the dog to clear up any mess. Unawareness of fouling or no suitable means of removal are not reasonable excuses for failing to clear up after the dog.

Information about persons regularly allowing a dog to foul the pathway may be passed to the local council (Melton 01664 502502) or dog warden. Persons may receive a fixed penalty fine.

Let's keep Harby a 'poo free' place where everyone can walk safely and cleanly. The spring in our step should be for pleasure, not because we have to jump over piles of mess. Maybe tie a plastic bag to the dog lead so whoever walks the dog – adult or child- is prepared.

Many thanks to all those dog owners who already 'bag it and bin it'.



Gill Becken, Principal NHW coordinator, Harby 'Eye'



Would you like
to support
your local
community?



Belvoir First Aid is holding some fully certified HSE first aid training sessions in Stathern on the following dates:

Saturday 19th February

Saturday 12th and Sunday 13th March

Saturday 19th and Sunday 20th March

Emergency First Aid

First Aid at Work (FAW part 1&2)

First Aid at Work (FAW part 3&4)

All welcome but book in advance. Free to BFA members and supporters.

Others please give a donation towards charity funds.

www.belvoirfirstaid.org.uk **donate@belvoirfirstaid.org.uk**

Parish Council News

Sorry, there is no report of the meeting held on 21st February, as the Journal couldn't wait! *Editor.*

CLAWSON HOSE AND HARBY PARISH COUNCIL - DATES FOR MEETINGS FOR 2011

The meeting will usually be on the third Monday of the month.

All Meetings will commence at 7.00 p.m.

Monday 14 th March	Hose Village Hall
Monday 21 st March Annual Parish Meeting	Harby Valley Christian Centre
Monday 18 th April	Harby Valley Christian Centre
<i>Thursday 5th May Parish Council elections</i>	
Monday 16 th May AGM and Ordinary Meeting	Hose Village Hall
Monday 20 th June	Long Clawson Village Hall
Monday 18 th July	Harby Valley Christian Centre
Monday 22 nd August	Hose Village Hall
Monday 19 th September	Long Clawson Village Hall
Monday 17 th October	Harby Valley Christian Centre
Monday 21 st November	Hose Village Hall
Monday 12 th December	Hose Village Hall

** July/August dates are subject to change but notice will be given.

New Year's Day Holiday January 3	*	Good Friday April 22
Easter Monday April 25	*	Early May Bank Holiday May 2
Spring Bank Holiday May 30	*	Summer Bank Holiday August 29
Boxing Day December 26	*	Christmas Day Holiday December 27

1st Long Clawson Scout Group

has opened a cub pack and scout troop on Wednesdays at 7.00 pm - 8.30 pm at Long Clawson village hall for all boys and girls aged 8 - 14 years who live in the Vale of Belvoir. Do you enjoy learning new skills, making new friends, art and crafts, camping, sleep-overs, cooking, sports and games, challenges, archery, air-rifle shooting? Then this may be for you.

IS ANY ONE INTERESTED IN BECOMING A BEAVER LEADER? WE WOULD LIKE TO OPEN A BEAVER COLONY AND ARE LOOKING FOR ADULTS AGED 18+ WHO WOULD BE WILLING TO TRAIN AND PROVIDE A FUN AND EXCITING PROGRAMME FOR CHILDREN AGED 6-8. YOU WOULD HAVE FULL SUPPORT FROM THE OTHER LEADERS.

WE ALSO NEED PEOPLE TO JOIN OUR EXEC COMMITTEE AS CHAIRPERSON, SECRETARY, TREASURER. WE ARE COMMITTED TO PROVIDING SCOUTING FOR YOUNG PEOPLE IN THE VALE, BUT TO CONTINUE AND GROW WE WOULD VALUE YOUR HELP.

For further information, pop in on Wednesday nights and see us in action, or call Lisa Allen (Akela) on 07900620819, or email firstlongclawsoncubscoutpack@yahoo.co.uk



news SHOP

Colin Rowland 18 Pinfold Lane
07557095345 Harby
corwln@aol.com

Newspaper and Magazine deliveries

I can deliver to your door whatever the weather, 364 days a year.

Efficient and reliable service.
No order too small and no need to leave the house to pay.

COMPUTER S.O.S

Your Local HOSE based Specialist For :

- Crashed/Slow computer
- Internet/Email Setup & Problems
- Anti-virus advice/Install
- Software Installation
- New & Used PC's & Laptops

For any help, advice or support please call : -

Tel : 01949 861834
Mob : 0789 4352517
Email : Computer.sos@Virgin.net



FREE PUPPIES

1/2 Cocker Spaniel, 1/2 sneaky neighbour's dog.

FREE PUPPIES

Mother, a Kennel Club registered German Shepherd.

Father, Super Dog able to leap tall fences in a single bound.

WEDDING DRESS FOR SALE

Worn once by mistake.

Actual ads that have appeared in UK press.



The Journal is printed through the generosity of the British Parachute School, Langar.

British Parachute Schools For details of parachute jumping and sky-diving ring
01949 860878.



'Would you know how to save a life?'

For just two hours of your time you could learn simple life saving skills, by attending a Heartstart UK emergency life support course. Heartstart UK is an initiative co-ordinated by the British Heart Foundation aimed at teaching members of the public what to do in an emergency situation. This course is provided free of charge, and covers a range of skills including CPR, the recovery position and how to manage severe bleeding. At the end of the course you will receive a certificate of attendance.

2011 Heartstart course dates are as follows: 15th March, 27th April, 6th June, 25th July, 6th September and 26th October. All courses start at 7.00 pm. Venues to be arranged around the Vale of Belvoir. For further details of the courses or to book a place contact Jayne Whitehead 01949 860662

GARY SMITH BUILDING CONTRACTOR

**ALL TYPES OF BUILDING WORK
UNDERTAKEN FROM POINTING A
CHIMNEY TO BUILDING A HOUSE.**

**EXTENSIONS AND ALTERATIONS A
SPECIALITY.**

**ALL DOMESTIC JOINERY, BRICKWORK
AND PLASTERING.**

CALL FOR A FREE ESTIMATE
01949 860474

EMAIL - INFO@GCSMITH-BUILDER.CO.UK
OR VISIT OUR WEBSITE AT
WWW.GCSMITH-BUILDER.CO.UK.

Little Langar Lodge

Bed and continental breakfast.
Self-contained Spacious En-suite
Apartment with balcony and
private Entrance.

Off road parking
Internet access
Two double rooms
Viewing welcome.

Harby Road, Langar, Notts.

Tel/fax 01949-860429

www.littlelangarlodge.com



Stathern Garage

*We now service and repair
Vehicle Air Conditioning*

Re-gas, Service,
Leak Test & Clean

Prices from just £45.00 + VAT

For prompt and personal attention
call in or

Telephone 01949 860205

Home Carers

Carers required in Vale of Belvoir area.
Experience is not essential as all training
and support is provided.

Car owners required, walking rounds
available in Scaford and Waltham.

Competitive rates of pay.

Interested? Not sure? Call us for an
informal chat about the work involved.

**Tel: Lisa 01664 481211 between
8.30 am & 4.30 pm**

M. R. J. FAULKS & SON LTD

Agricultural and Plant Contractor

Plant Hire • All Ground Works etc

- Small or large scale landscaping
- House footings; driveways; ponds & lakes
- Competitive rates
- Free quotes



Southlea, 3 Stathern Lane, Harby, Melton Mowbray, Leics, LE14 4DA
Telephone 01949 860288 Mobile 07971 022867

BRIAN COTTINGHAM & SON

ELECTRICAL ENGINEERS

Electrical installations - domestic, commercial and industrial

Electrical breakdown maintenance and repairs

Electrical installation inspection and testing

Lee Cottingham

Tel: 01949 869449 * Mobile: 07860 430 722

Email: lee@briancottingham.co.uk

National Inspection Council for
Electrical Installation Contracting



APPROVED CONTRACTOR



WILLIAM ROBERTS AND SONS

INDEPENDENT FUNERAL DIRECTORS

— Est 1930 —



Dignity and Discretion from a local business

**Private Chapels of Rest
Monumental Stonework**

Devon Ford, Devon Lane, Bottesford

Tel: (01949) 842401 - (24 Hours)

Contact us for information on pre-paid arrangements with Golden Charter